

REX

indoor²

touchpad

USER MANUAL

Navkom



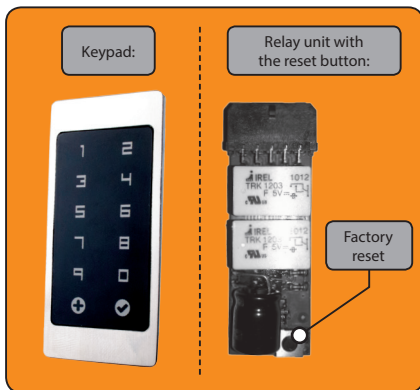
TECHNICAL DATA

- Voltage 8 – 30V direct or alternating
- Use: maximum 150mA
- Number of codes: 100, of which 1 is an administrator code
- Length of code: optional, from 4 to 16 characters
- 2 separate relay exits
- 256-bit encrypted connection to the relay unit
- Capacitive illuminated keys
- Installation into a door wing

INDEX

1. DEVICE COMPONENTS	3
2. DESCRIPTION AND CORRECT USE OF KEYPAD	4
3. ENTERING THE ADMINISTRATOR CODE	4
4. ENTERING THE USER CODE	4
5. UNLOCKING THE DOORS	4
6. DELETING THE USER CODE	4
7. CHANGING THE ADMINISTRATOR CODE	5
8. DELETING THE ENTIRE BASE	5
9. RESTORING FACTORY SETTINGS (RESET)	5
10. DISABLING THE ILLUMINATION OF THE KEYPAD	5
11. MAINTENANCE AND CLEANING OF THE DEVICE	5
12. TABLE OF SIGNALS	6
13. ERROR DESCRIPTION AND ELIMINATION	7
14. MANUFACTURER'S WARRANTY	7
15. QUICKGUIDE	8

1. DEVICE COMPONENTS



2. DESCRIPTION AND CORRECT USE OF KEYPAD

The keypad has 10 digits and two function keys: ⊕ (the plus), which is used for adding, and ☑ (the checkmark), which is used for code deleting and confirming or for unlocking. The keypad is illuminated with blue backlight. The function keys are illuminated with green backlight when a correct code has been inserted or when a suitable function is being activated. Red backlight is activated when the code is incorrect or when a suitable function is activated. Under strong light the illumination of the keypad is poorly visible and the keys will appear white. Should the programming of the keypad be made under strong light, it is recommended that you shade the keypad in order to better see the illumination and the light signals. When any of the keys is being pressed, you will hear a short beep, which signals that the key has been activated.

The keys are capacitive, and each has a sensor underneath, which detects a finger that has been pressed over. In order to activate a key, you have to cover the entire digit with your finger, by touching it lightly and quickly. If the finger approaches the key slowly, it might not activate the key.

100 different codes can be stored in the keypad. Each code can be of arbitrary length: at least 4 digits and not more than 16 digits. The first code that is set is the administrator's code.

Only with this code it is possible to change the functions of the keypad and to add and delete other codes. There is only one administrator's code, stored in the keypad.

The keypad should be used only by the means of the finger. Do not use hard or sharp objects for typing, as they can damage the surface of the keypad.

3. ENTERING THE ADMINISTRATOR CODE

- Press the **+** key for 3s.
- The blue LED will start blinking quickly. Choose which relay this code will activate. If you press number 1, this code will activate relay 1. If you press number 2, this code will activate relay 2. If you press numbers 1 and 2 together, this code will activate both relays at the same time. The chosen number(s) must be pressed for 2s.
- The green LED lights up and you will hear a 1 second long beep.
- The blue LED starts blinking slowly.
- Now enter the administrator code. The code can consist of a minimum of 4 and a maximum of 16 digits.
- Press **✓** for 1s for code confirmation.
- The green LED lights up and you will hear a 1 second long beep.
- The administrator code has been saved.

ATTENTION: If you forget the administrator code, you will no longer be able to control the device and will have to reset it. How to reset the device is described in the chapter »Restore Factory Settings.«

4. ENTERING THE USER CODE

- Press the **+** key for 3s.
- When the blue LED starts blinking slowly, enter the administrator code and press **✓**.
- The green LED lights up and you will hear a 1 second long beep.
- The blue LED starts blinking quickly (This might not be visible under strong light).
- Choose which relay this code will activate. If you press number 1, this code will activate relay 1. If you press number 2, this code will activate relay 2. If you press numbers 1 and 2 together, this code will activate both relays at the same time. The chosen number(s) must be pressed for 2s.
- The green LED lights up and you will hear a 1 second long beep.
- The blue and green LED start blinking alternately. Enter the user code. The code can consist of a minimum of 4 and a maximum of 16 digits.
- Press **✓** for 1s for code confirmation.

- The green LED lights up and you will hear a 1 second long beep. The user code has been saved.

The user code can only be used for unlocking the door. It cannot be used for adding or deleting other codes. The user code can be deleted at any time, using the administrator code. The keypad can store 99 user codes.

If you forget the user code, you can enter a new one, using the administrator code, or delete the entire database start from the beginning.

5. UNLOCKING THE DOORS

When at least one code has been entered, it can be used to unlock the door:

- Type in the code.
- Press **✓**.
- The green LED will light up and you will hear a 1 second long beep. The door will unlock.

Should you enter the wrong code, a red LED lights up and you will hear 3 short beeps. The door will not unlock. If you enter a wrong code for three times in a row, the keypad will lock itself for 10s. During that time a code cannot be entered. If you enter a wrong code for three more times in a row, the keypad will lock itself for 2 minutes.

6. DELETING THE USER CODE

- Press for **✓** 5s.
- When the blue LED will start blinking, enter the administrator code and press **✓**.
- The green LED will light up and you will hear a 1 second long beep.
- The green and red LED will start blinking alternately.
- Enter the user code you wish to delete and press **✓** for 1s.
- The green and red LED will light up and you will hear three 1 second long beeps. The code has been deleted.

You can delete any user code. The administrator code cannot be deleted however. It can only be changed or you can choose to delete the entire database.

7. CHANGING THE ADMINISTRATOR CODE

- Press for **✓** 5s.
- When the blue LED will start blinking, enter the administrator code and press **✓**.
- The green and red LED will start blinking alternately.
- Enter the old administrator code and press for **✓** 1s.

- The green LED will light up and you will hear a 1 second long beep.
- The blue LED will start blinking. Enter a new administrator code and press **✓** for 1s. The code can consist of a minimum of 4 and a maximum of 16 digits.
- The green LED will light up and you will hear a 1 second long beep
- The administrator code has been changed.

8. DELETING THE ENTIRE BASE

If the case of changing the owners or for any other reason, you can delete the entire database and thus restore the device to its original state.

- Press **✓** and **+** together for 10s.
- Blue and red LED will start blinking alternately.
- Enter the administrator code and press **✓**.
- Blue and red LED will light up and a you will hear 5 beeps.
- The entire code base has been deleted.

ATTENTION: after this operation it is recommended that you enter a new administrator code right away, thus protecting the device from abuse!

9. RESTORING FACTORY SETTINGS (RESET)

If you have lost or forgotten the administrator code and the device can no longer be controlled, the device can be reset or restored to its factory settings. There is a small button on the relay unit, which resets the device. Relay unit is located inside the door next to the motor mechanism. The locking mechanism must be unscrewed and taken out of the door profile in order to access the relay unit. The device must be plugged in. Press the button on the relay unit for 30s. After 30s the device will be reset and put back to its original state.

10. DISABLING THE ILLUMINATION OF THE KEYPAD

The illumination of the keypad can be disabled so that it turns off 15s after each function has ended.

- Press for **+** 20s. After 3s the keypad starts blinking. Ignore that and continue to hold **+**, until 20s have passed.
- The green LED will start blinking.
- To disable the illumination, press for **+** 3s or to enable the illumination, press **✓** for 3s.
- If disabling the illumination has been selected, the green LED will light up and you will hear 3 beeps. If enabling the illumination has been selected, the green LED lights up and you will hear only one beep.

When the illumination is disabled, the blue illumination of the keypad turns off 15s after any operation has ended. The illumination will turned back on by pressing any of the keys.


11. MAINTENANCE AND CLEANING OF THE DEVICE

The device does not require maintenance. Should the keypad need cleaning, use a dry or slightly damp soft cloth. Do not use aggressive detergents, solvents, lye or acids for cleaning. Use of aggressive cleaning agents may damage the surface of the keypad and in this case complaints will be invalid.

12. TABLE OF SIGNALS

LED	BEEP	FREQUENCY	EXPLANATION
Blue	No	On constantly	The device is ready and waiting for a code to be entered or a function to be activated.
Blue	No	Off	<ul style="list-style-type: none"> The device has been turned off or is not plugged in. The device is ready, but the illumination has been turned off. Press any key to turn it on.
Blue	No	Blinking quickly	The device is waiting for a relay to be selected. Press No. 1 for relay 1, No. 2 for relay 2 or No. 1 and 2 together for both relays.
Blue	No	Blinking slowly	The device is waiting for the administrator code to be entered.
Green	Yes	1 x 1 s	<ul style="list-style-type: none"> The code is correct. The code has been entered. A relay has been selected. Constant illumination has been selected.
Green	Yes	3 x 1 s	Disabling of the illumination function has been activated.
Green	No	Blinking constantly	The device is waiting for the illumination mode to be selected.
Green and red	No	Alternately	<ul style="list-style-type: none"> Function of deleting the user code: Enter the user code which you would like to delete. Function of changing the administrator code: Enter the old administrator code.
Green and red	Yes	3 x 1 s	The user code has been deleted.
Green and blue	No	Alternately	Function of adding a user code: Enter a new user code.
Red	Yes	3 x 0,2 s	The code is incorrect.
Red	No	On constantly	A wrong code has been entered three times in a row and the device is locked, at first for 10 s. If a wrong code is entered three more times in a row, the device will lock itself for 2 minutes.
Red	No	Blinking constantly	Device error.
Red and blue	No	Alternately	Function of deleting the entire base: Enter the administrator code.
Red and blue	Yes	5 x 1 s	Function of deleting the entire base: The database has been deleted.

13. ERROR DESCRIPTION AND ELIMINATION

DESCRIPTION	CAUSE
The keypad does not react to the touch of a finger.	You did not use enough of the finger's surface to press the key. The finger must cover the entire digit.
	You drew the finger to the key too slowly. The key must be pressed quickly.
The door does not open after entering the code.	If the device still does not react after several attempts, it is malfunctioning and you should call a repairman.
	You forgot to press  after entering the code.
	The code is incorrect.
	The code has been deleted.
I cannot see the illumination of the keypad.	If the code is correct and after entering it a green LED lights up and a beep goes on for 1s, the electric lock is malfunctioning. Call a repairman.
	Illumination of the keypad is poorly visible under the strong light.
	The device's illumination has been disabled. Press any key to turn on the illumination.
	The device has been turned off or is not plugged in.
The red LED is on constantly. I cannot enter a code.	The device is malfunctioning. Call a repairman.
	The wrong code has been entered 3 times in a row and the keypad is temporarily locked.
The red LED is blinking constantly.	The device is malfunctioning. Call a repairman.

14. MANUFACTURER'S WARRANTY

Warranty conditions:

The warranty period is 24 months from the day of hand on of the product to the final customer. With this statement, the manufacturer of the product, NAVKOM d.o.o., guarantees that in the warranty period the REX-touchpad (the product) will operate faultlessly and that the materials it is made of are faultless and undamaged. If the customer finds a fault in the functioning of the product, they can enforce the rights under the warranty on the seller or the manufacturer, who shall issue a claim receipt. The manufacturer undertakes that in the event of a justified complaint they shall eliminate the malfunction no later than 45 days after the day of complaint. If the malfunction is impossible to repair, the customer will receive a new product from the seller or the manufacturer no later than 45 days after the day of complaint.

Notes concerning the warranty enforcement:

The customer assumes all risks and expenses incurred during the transport of the product to the licensed seller or the licensed

service. The warranty is only valid if the warranty certificate is completely filled in by Navkom d.o.o. or a licensed seller of the product or if the circumstances of the purchase are satisfactorily evidenced from other documents. Therefore, please ensure that your name, the name of the seller, the serial number of the product, the year, month and day of the purchase are written in full in the original pro forma invoice or invoice; or see to it that your purchase receipt showing the name of the seller, the date of the purchase and type of product is attached to the original warranty certificate. Navkom d.o.o. reserves the right to refuse to provide repairs free of charge where the submitted warranty certificate is not completely filled in and the above mentioned document (invoice, bill) is not enclosed, or when the data on the warranty certificate are not completed or are illegible. Keep the warranty certificate in a safe place because we cannot issue a duplicate.

Warranty extension:

In the case that the customer enforced the warranty and the licensed service found the complaint to be justified, the warranty

period is extended for the time the product was at service. If the respective product has undergone a major service intervention, or if the product was replaced, a new warranty is issued to the customer for a 24 month period.

The warranty cannot be enforced in the case of:

1. Any defect caused by improper handling of the product (e.g. the use of the product with the intentions and in a manner not specified in the instructions for use, handling and maintenance etc.).
2. Any defect caused during repair, adaptation, cleaning or any other intervention in the product by any other party except the services licensed by Navkom d.o.o.
3. Any defect caused because of transport, fall, hit etc. after the purchase of the product.
4. Any defect caused by burning/fire, earthquake, flood, lightning, other natural disasters, polluted environment and improper voltage of the electrical supply.
5. Any defect caused by negligent handling or inappropriate storage of the product (e.g. keeping it at high temperatures or high humidity, in the vicinity of insecticides, e.g. naphthalene, or medicines, poisons or chemicals which can cause damage), inappropriate maintenance etc.
6. When the product which was sent to repair is not accompanied by the warranty certificate.
7. Any changes of the warranty certificate concerning the year, month and day of purchase, name of the customer or seller and serial number.
8. When the warranty certificate is not accompanied by the receipt for the item(s) purchased (invoice).

Limits of liability:

Navkom d.o.o. does not either represent or guarantee, explicitly or implicitly, anything on behalf of the suppliers or in connection with the contents of written materials. It is in no way liable to warrant the purchased material or its suitability for certain purpose or any consequent injury, accidental damage or immediate damage (including but not limited to the damage or loss of business profits, the termination of business operations and the loss of business information), derived from the use or incapability of use of these printed materials or device. Some countries do not allow limitations of liability concerning consequential or accidental damage; therefore, it is possible that the above mentioned provision does not apply. In the case that the customer sends the reclaimed product via mail, it is advised to secure the consignment. The seller and the manufacturer are not liable for damage caused during transportation.

Serial number:

Purchase date:

Installation date:

Name of the customer:

Adress of the customer:

Stamp and signature of the seller:

REX-touchpad was manufactured by:

Navkom d.o.o., Prijateljeva 24, 1000 Ljubljana, Slovenija
info@navkom.si, www.navkom.si

Product type:

Keypad based access control device

ADMINISTRATOR CODE
(first code entered)

PRESS **+** 3 s
BLUE IS FLASHING RAPIDLY.

CHOOSE THE RELAY:
Relay 1: number 1
Relay 2: number 2
Both relays:
numbers 1 and 2
GREEN + BEEP 1 s.
BLUE IS FLASHING SLOWLY.

ENTER ADMIN. CODE 4 - 16
NUMBERS.
PRESS **✓** 1 s.

GREEN + BEEP 1 s
THE CODE SAVED.

LIGHTING MODE TURN OFF
AFTER 15 s

PRESS **+** 20 s.

BLUE IS FLASHING AFTER
3 s (ignore and remain
pressing the button),
GREEN IS FLASHING.

SELECT LIGHTING MODE
TURN OFF AFTER 15 s:
PRESS **+** 1 s.

GREEN + BEEP 3 X 1 s.
LIGHTING MODE TURNS
OFF 15 s AFTER THE END
OF EACH FUNCTION.

USER CODE

PRESS **+** 3 s.
BLUE IS FLASHING SLOWLY.

ENTER ADMIN. CODE.
PRESS **✓**.
GREEN + BEEP 1 s. BLUE IS
FLASHING RAPIDLY.

CHOOSE THE RELAY:
Relay 1: number 1
Relay 2: number 2
Both relays:
numbers 1 and 2
GREEN + BEEP 1 s.
BLUE IS FLASHING SLOWLY.

ENTER USER CODE 4 - 16
NUMBERS.
PRESS **✓** 1 s.

GREEN + BEEP 1 s
CODE IS SAVED.

SELECT CONSTANT
LIGHTING:
PRESS **✓** 1 s.

GREEN + BEEP 1 s.
CONSTANT LIGHTING
TURNS ON.

UNLOCKING THE DOOR

ENTER YOUR PASSWORD
AND PRESS **✓**.

GREEN + BEEP 1 s
THE DOOR UNLOCKS.

DELETE USER CODE

PRESS **✓** 5 s.
BLUE IS FLASHING.

ENTER ADMIN. CODE.
PRESS **✓**.
GREEN + BEEP 1 s.
GREEN AND RED ARE
FLASHING ALTERNATINGLY.

ENTER USER CODE YOU
WISH TO DELETE. PRESS
✓ 1 s.

GREEN + RED + BEEP 3 X 1
s. USER CODE IS DELETED.

CHANGING
ADMINISTRATOR CODE

PRESS **✓** 5 s.
BLUE IS FLASHING.

ENTER ADMIN. CODE.
PRESS **✓**.
GREEN + BEEP 1 s.
GREEN AND RED ARE
FLASHING ALTERNATINGLY.

ENTER OLD ADMIN. CODE,
PRESS **✓** 1 s.
GREEN + BEEP 1 s.
BLUE IS FLASHING.

ENTER NEW ADMIN. CODE
4 - 16 NUMBERS.
PRESS **✓** 1 s.

GREEN + BEEP 1 s.
NEW ADMIN. CODE IS
SAVED.

DELETE ENTIRE BASE

PRESS **+** AND **✓** 10 s.
BLUE + RED ARE FLASHING
ALTERNATINGLY.

ENTER ADMIN. CODE AND
PRESS **✓**.

BLUE + RED + BEEP 5 X 1 s.
ENTIRE CODE BASE IS
DELETED.